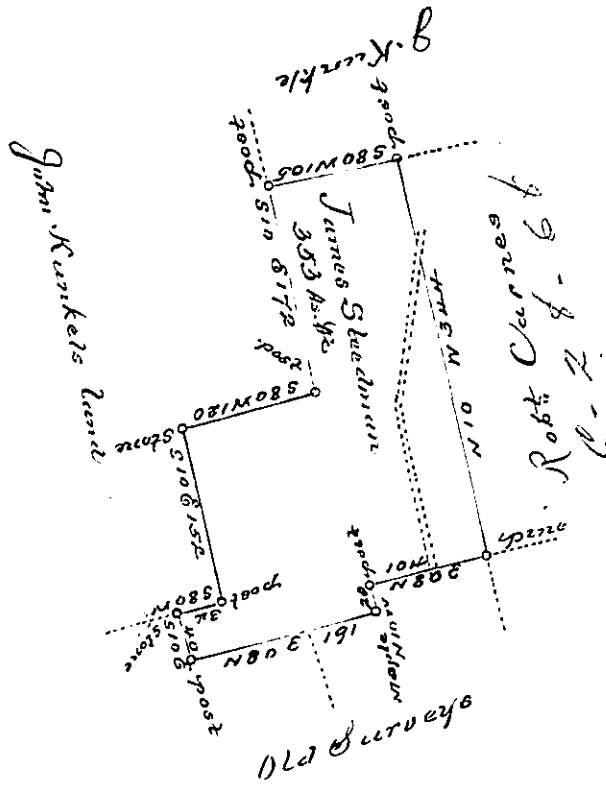


Hazle  
Luzerne



A Draft of a Tract of Land Called. Situate near land surveyed for John Paller in the County of Luzerne, Containing three hundred and fifty three acres & Allowance. Surveyed for James Steedman on the 3<sup>d</sup> day of October 1793. by virtue of a warrant dated the 13<sup>th</sup> day of June 1793.

by Wm. Gray D.S.

To Daniel Brodhead Esq.  
Surt. Gen?

IN TESTIMONY that the above is a copy of the original remaining on file in the Department of Internal Affairs of Pennsylvania, made conformably to an Act of Assembly approved the 16th day of February, 1833. I have hereunto set my Hand and caused the Seal of said Department to be affixed at Harrisburg, this third day of December, 1895.

*James W. Latta*  
Secretary of Internal Affairs.